

# NICARAGUA PACIFIC: THE COMPLETE COLLECTION

Nicaragua Pacific is the definitive data source for your frontier exploration. Recently operated and de-risked by Equinor, this region is a promising candidate for new discoveries.

This complete data package (PSTM & PSDM) was expanded in 2022 and incorporates all available data in the region:

1. 3D & 2D data acquired in 2018
2. 2D data acquired in 2015 by Geoex MCG
3. Legacy 2D data acquired between 1973-2003

Datasets are available for viewing, please contact:

**Jean-Philippe Rossi**

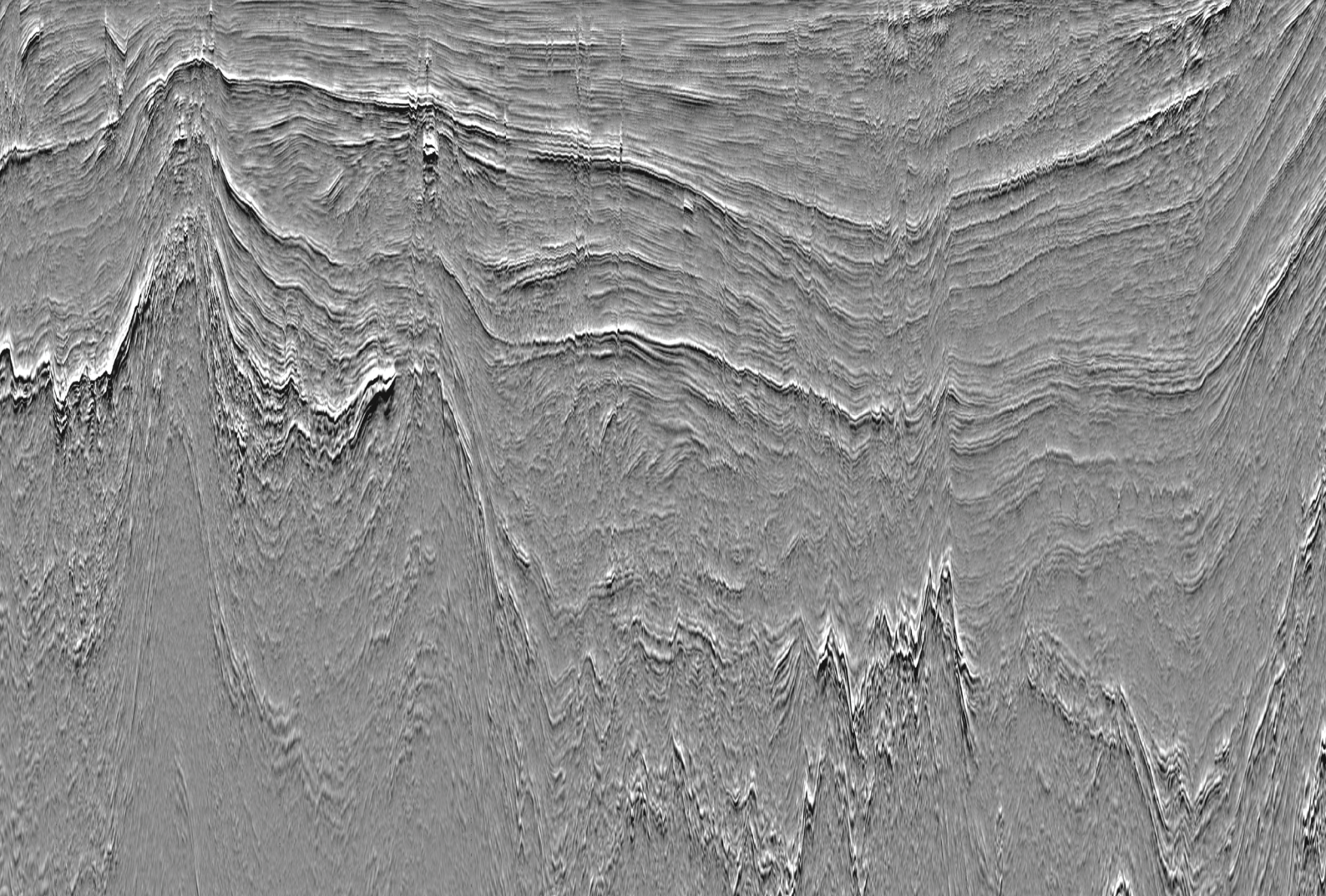
[jp.rossi@geoexmcg.com](mailto:jp.rossi@geoexmcg.com)

+44 7729 107 409

Learn more at [www.geoexmcg.com](http://www.geoexmcg.com)



**Geoex MCG**



## Geological Prospectivity

The Pacific Coast of Nicaragua comprises the Sandino Basin - a fore-arc basin located in front of the Caribbean Plate of Nicaragua, which was developed during the Cretaceous and contains up to 10,000 meters of Cretaceous and Tertiary sediments. This basin comprises 160 km of the Middle American Trench and extends onshore through the Nicaraguan Depression.

Reservoir and source rocks have been identified in the Sandino basin. The sedimentary infill of Sandino basin represents a prograding succession of sediments grading from deep (pelagic to slope deposits) to shallow marine to transitional continental system.

## Program Parameters

Parameter	3D ST18005	2D ST18005	2D Geoex MCG	Legacy Data
Data size	3,227 km <sup>2</sup>	1,328 km	5,892 km	4,708 km
Data type	3D seismic	2D acq. with a 3D vessel	2D seismic	2D seismic
Gravmag	Yes	Yes	N/A	N/A
Year	2018	2018	2015	1973, 1990, 2004 / re-processed 2016
Streamer length / no.	12 x 6,000 m	12 x 6,000 m	8,100 m	2,100 to 3,216 m
Sample rate	2 ms	2 ms	2 ms	1 to 4 ms
Source volume	3,480 in <sup>3</sup>	3,480 in <sup>3</sup>	3,850 in <sup>3</sup>	45 to 1,050 in <sup>3</sup>
Products	PSTM & PSDM	PSTM	PSTM	PSTM