

# MOROCCO ATLANTIC REGIONAL DEEP IMAGING

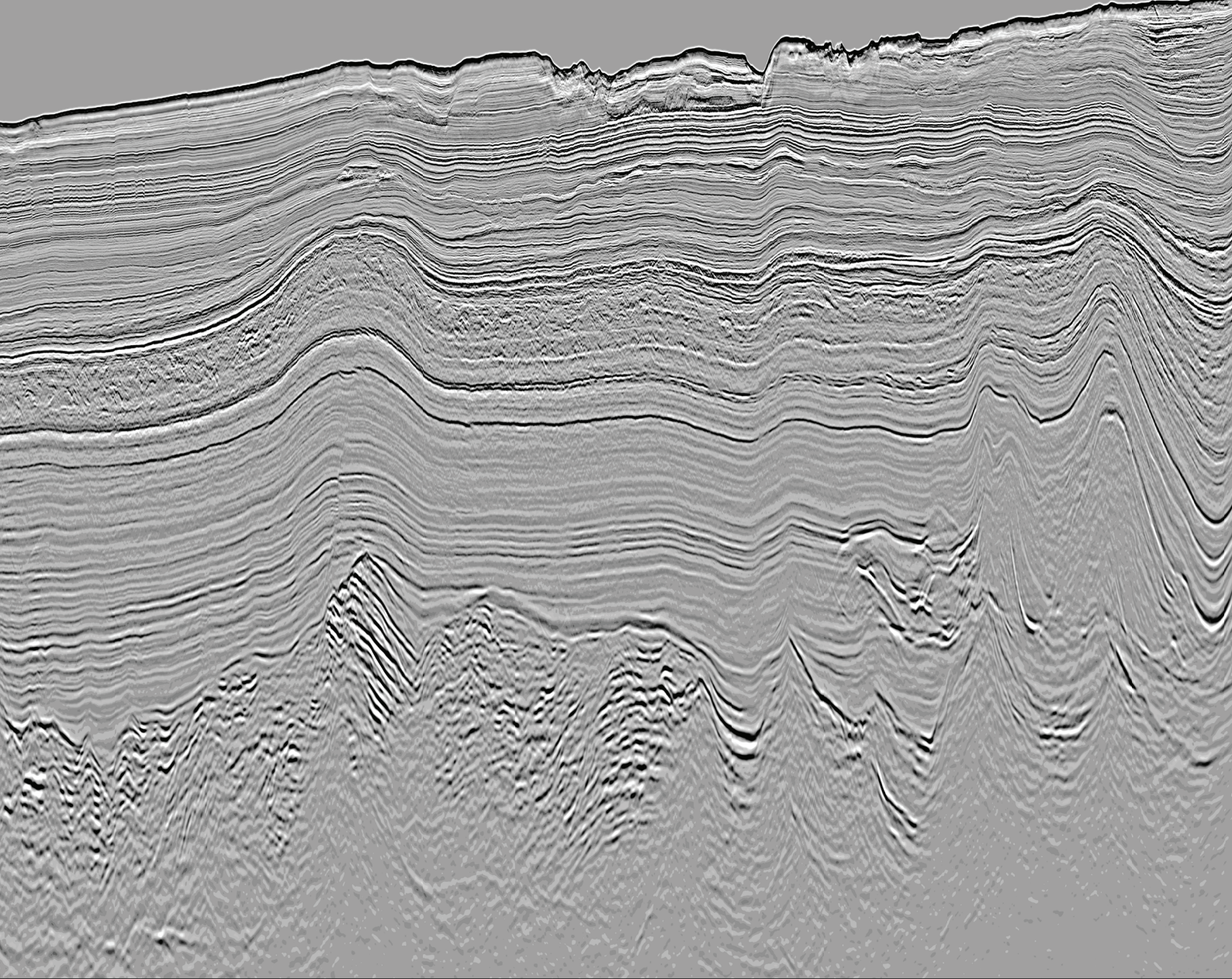
Geoex MCG are pleased to present the Morocco Atlantic Regional Deep Imaging (MARDI). The multi-client survey provides 14,986 km of 2D well-tie seismic and gravity-magnetic data. PSTM & PSDM deliverables are available.

Interpretation atlas available.

Learn more at [www.geoexmcg.com](http://www.geoexmcg.com)



**Geoex MCG**



## Prospectivity

The modern high-resolution 2D seismic survey is designed to connect all offshore wells (including DSDP) and image the geological basins in this promising area full of exploration opportunities. The data aims to provide a better understanding of the existing Jurassic, Cretaceous and Tertiary petroleum systems and are the perfect starting point for creating a modern basin modelling of source, migration and reservoir distribution.

MARDI will be the geological backbone for your analysis, selection of highly prospective areas and future license applications.

## Acquisition parameters

Streamer Length	10 km
Streamer Depth	12 m
Records Length	18 s
Sample Rate	2 ms
Shot Point Interval	25 m
Fold	200
Source Depth	7.5 m ( $\pm 1$ )

## Processing parameters

PSTM and PSDM using the full integrated DUG Broad processing workflow with integration of gravity data and well data for velocity building and calibration.

PSDM imaging will be down to the equivalent depth indicated by a record length of 18 s.